

## ORIGINAL ARTICLE

## Improvements to B cell clonality analysis using PCR amplification of immunoglobulin light chain genes

T C Diss, H X Liu, M Q Du, P G Isaacson

*J Clin Pathol: Mol Pathol* 2002;**55**:98–101

**Aims:** Clonality analysis using polymerase chain reaction (PCR) amplification of the immunoglobulin heavy chain (IgH) gene is an important aid to the diagnosis of B cell lymphoproliferative diseases. However, the method has a relatively high false negative rate. In an attempt to improve detection rates simple PCR strategies for clonality analysis of B cell populations using amplification of Ig light chain genes have been developed.

**Methods:** Novel PCR protocols, designed to amplify Ig $\kappa$  and Ig $\lambda$  light chain genes, were evaluated using high molecular weight DNA samples from 28 selected cases of B cell lymphoma with known light chain expression and 12 reactive lymphoid specimens. Products were run on 10% polyacrylamide minigels using heteroduplex analysis. Conventional IgH PCR analysis was also performed. Twelve randomly selected formalin fixed, paraffin wax processed samples from cases submitted for molecular genetic analysis were also studied.

**Results:** Polyclonal products were seen in all reactive lymphoid samples. Using Ig $\kappa$  PCR, 24 of 28 lymphomas, including four of five IgH negative cases, displayed monoclonal patterns. Using Ig $\lambda$  PCR, eight of 12 Ig $\lambda$  expressing tumours, including two of five IgH negative cases, showed monoclonal patterns. Standard IgH PCR demonstrated monoclonality in 23 of 28 B cell lymphomas. The detection rate was improved to 27 of 28 lymphomas using heavy and light chain PCR. Efficient amplification was achieved using paraffin wax processed samples, seven of which showed monoclonality compared with eight using IgH PCR.

**Conclusions:** Ig light chain PCR, used in conjunction with heavy chain analysis, enables improved detection of B cell monoclonality using routine histological specimens and can provide additional clone specific markers for the study of the biology of B cell tumours.

See end of article for authors' affiliations

Correspondence to:  
Dr T Diss, Department of  
Histopathology, Royal Free  
and University College  
Medical School, University  
Street, London, WC1E 6JJ,  
UK; t.diss@ucl.ac.uk

Clonality analysis of B cell populations using polymerase chain reaction (PCR) amplification of immunoglobulin (Ig) genes<sup>1</sup> has become an important aid to the diagnosis of problematic B cell lymphoproliferative diseases, largely replacing more cumbersome hybridisation techniques.<sup>2</sup> The Ig heavy (IgH) chain gene has been the preferred target because most B cell tumours have rearranged IgH genes.<sup>3–4</sup> However, a large proportion of B cell tumours (up to 30% depending on lymphoma type and grade) are not amenable to amplification of IgH because of the loss of target sequences or alteration as a result of somatic hypermutation.<sup>1–4</sup> Cases that escape amplification using IgH PCR may be amplified using Ig light chain PCR. Strategies for the amplification of Ig light chain genes have been devised,<sup>5–7</sup> but have not become well established, especially for the amplification of routinely fixed, paraffin wax embedded samples in which the DNA may be highly degraded. We have developed simple PCR strategies aimed at routine analysis of paraffin wax embedded tissue samples for clonality analysis using primers directed at the CDR3 regions of the rearranged Ig $\kappa$  and Ig $\lambda$  light chain genes.

"A large proportion of B cell tumours are not amenable to amplification of IgH because of the loss of target sequences or alteration as a result of somatic hypermutation"

## MATERIALS AND METHODS

## Primer design

Ig $\kappa$  and Ig $\lambda$  light chain primers were designed from consensus fragments of the FR3 and J regions after analysis of all known V and J family members (MRC Centre for Protein Engineering; <http://www.mrc-cpe.cam.ac.uk/imt-doc/vbase-home-page.html>). The selected Ig $\kappa$  primers amplified fragments of

**Table 1** Details of the primers used

Primer	Sequence (5'→3')	Regions targeted
V $\kappa$ FR3-1	TTCAG(C/T)GGCAGTGG(A/G)TCTGG	V $\kappa$ I, III, IV, V, VI
V $\kappa$ FR3-2	TTCAGTGGCAGTGGG(G/T)CAGG	V $\kappa$ II
J $\kappa$ 1	TTTGAT(A/T/C)TCCACCTTGGTCCC	J $\kappa$ IV
J $\kappa$ 2	TTAATCTCCAGTCGTGCC	J $\kappa$ V
V $\lambda$ -FR3	GA(T/C)GAGGCTGA(T/C)TATTACTG	V $\lambda$ I-VII
J $\lambda$ 1	AGGACGGTGACCTTGGTCCC	J $\lambda$ I
J $\lambda$ 2	AGGACGGTCAGCT(G/T)GGT(C/G)CC	J $\lambda$ II, III, VII

approximately 130 to 150 base pairs using two V $\kappa$  and two J $\kappa$  primers in a single PCR reaction (table 1).

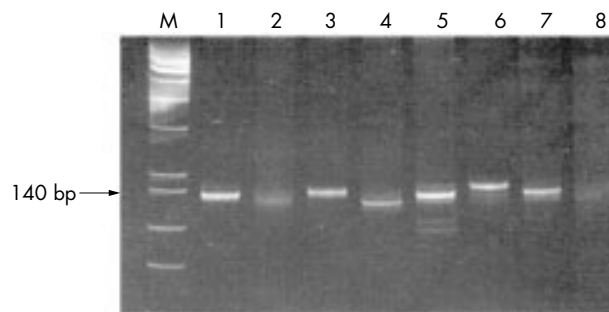
The Ig $\lambda$  primers amplified fragments from about 70 to 90 base pairs using a single V $\lambda$  and two J $\lambda$  primers (table 1). Each J $\lambda$  region primer was used with the V $\lambda$  region primer in separate reactions because a single multiplex reaction yielded non-specific products.

Reactions were optimised using high molecular weight DNA from reactive lymphoid samples and from B cell lymphomas with known light chain rearrangements by Southern blot analysis.

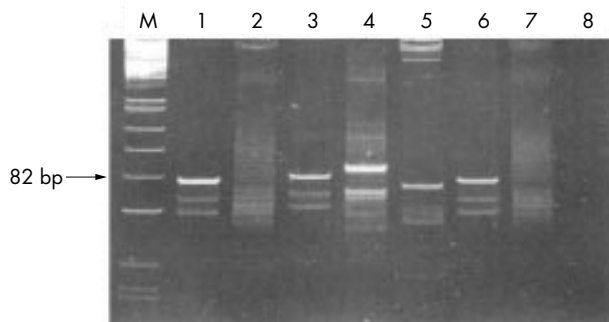
## Primer evaluation

Primers were evaluated using high molecular weight DNA extracted from 28 B cell lymphomas (20 marginal zone, four

**Abbreviations:** IgH, immunoglobulin heavy chain; PCR, polymerase chain reaction



**Figure 1** Polyacrylamide gel (10%) of Ig $\kappa$  PCR products. Lane M, PhiXHinfI molecular weight markers; lane 1, positive monoclonal control marginal zone lymphoma (fresh tissue; FT); lane 2, follicular lymphoma (paraffin wax processed tissue; PT); lane 3, lymphoplasmacytic lymphoma (FT); lane 4, marginal zone lymphoma (FT); lane 5, follicular lymphoma (PT); lane 6, follicular lymphoma (FT); lane 7, follicular lymphoma (FT); lane 8, reactive lymph node (FT).



**Figure 2** Polyacrylamide gel (10%) of Ig $\lambda$  PCR products. Lane M, PhiXHinfI molecular weight markers; lane 1, positive control lymphoplasmacytic lymphoma (fresh tissue; FT); lane 2, marginal zone lymphoma (paraffin wax processed tissue; PT); lane 3, follicular lymphoma (PT); lane 4, marginal zone lymphoma (FT); lane 5, follicular lymphoma (FT); lane 6, lymphoplasmacytic lymphoma (PT; same case as lane 1); lane 7, reactive lymph node (PT); lane 8, negative control (no DNA).

follicular, two lymphocytic, one mantle cell, and one lymphoplasmacytic) with known light chain expression and shown to be monoclonal by IgH Southern blot analysis. Twelve reactive lymphoid tissue samples (10 lymph nodes and two tonsils) were used as polyclonal controls. Duplicate aliquots of 100 ng of DNA from each case were amplified in reaction mixtures containing 1 $\times$  reaction buffer, 1.5mM MgCl<sub>2</sub>, 200 $\mu$ M of each dNTP, 250 ng of each primer, and 0.5 units of Platinum Taq polymerase (Life Technologies, Paisley, UK). Thirty seven cycles of 93°C for 30 seconds, 58°C (60°C for Ig $\lambda$ ) for 30 seconds, and 72°C for one minute were performed using high molecular weight DNA samples and 40 cycles using paraffin

wax embedded tissue extracts; a final primer extension at 72°C for five minutes completed the reaction. After amplification, products were heated for five minutes at 95°C and transferred to ice for 60 minutes (heteroduplex analysis) before electrophoresis for 75 (Ig $\kappa$ ) or 45 (Ig $\lambda$ ) minutes at 200 V on 10% polyacrylamide minigels. Products with clearly visible dominant bands were interpreted as monoclonal, those with a smear of products as polyclonal. All samples were studied using IgH PCR with FR3/JH primers as routinely used in our department.<sup>3</sup>

#### Amplification of routine paraffin wax embedded samples

To evaluate the efficiency of amplification using routine samples, 12 extracts<sup>3</sup> from randomly selected formalin fixed, paraffin wax embedded samples of cases submitted for IgH clonality analysis were also studied using Ig $\kappa$  and Ig $\lambda$  PCR.

#### Sensitivity

DNA extracted from a B cell lymphoma was serially diluted with DNA from a reactive tonsil to give estimated tumour proportions of 50%, 25%, 10%, 5%, and 1%. Each dilution was amplified using Ig $\kappa$  and Ig $\lambda$  PCR.

#### Specificity

To confirm the specificity of amplified Ig light chain products, dominant bands from each of the reactions were sequenced.<sup>8</sup> PCR products were purified from 1.5% agarose gels using QIAquick gel extraction kit (Qiagen Ltd, Crawley, West Sussex, UK), ligated into the pGEM<sup>®</sup>-T vector and transformed into JM109 competent cells (Promega, Southampton, UK). The transformed cells were selected on LB ampicillin agar plates containing X-gal and IPTG. White colonies were screened using PCR with vector primers (Sp6 and T7). The PCR products showing the expected insert sizes were sequenced in both directions using an ABI sequencer with dRhodamine terminators (Perkin-Elmer, Foster City, California, USA). At least six PCR clones from each sample were sequenced.

## RESULTS

#### Primer evaluation

All primer sets yielded products within the predicted size ranges when applied to selected high molecular weight DNA samples. Using Ig $\kappa$  PCR, 24 of 28 B cell lymphomas, including four of five IgH PCR negative cases, showed a monoclonal pattern and four cases yielded a polyclonal smear pattern (fig 1; table 2). Using Ig $\lambda$  PCR, eight of 28 lymphomas were monoclonal, including eight of 12 Ig $\lambda$  expressing tumours and two of five IgH PCR negative cases. The remainder showed a polyclonal smear pattern (fig 2; table 2). As expected, no Ig $\kappa$  expressing lymphomas were amplified using Ig $\lambda$  primers because Ig $\kappa$  rearrangement precedes Ig $\lambda$ . With both Ig $\kappa$  and Ig $\lambda$  PCR 25 of the 28 lymphomas were monoclonal. Using standard IgH PCR 23 of the 28 B cell lymphomas were monoclonal. The detection rate was improved to 27 of 28 lymphomas using heavy and light chain PCR. Polyclonal products were seen in all reactive lymphoid samples studied.

**Table 2** PCR detection of monoclonal, rearranged immunoglobulin genes in DNA samples extracted from fresh/frozen B cell lymphomas and reactive lymphoid legions

Sample group	Number of cases	Ig $\kappa$ PCR	Ig $\lambda$ PCR	Ig $\kappa$ + $\lambda$ PCR	IgH PCR
B cell lymphomas	28	24 (86%)	8 (29%)	25 (89%)	23 (82%)
$\kappa$ + B cell lymphomas	16	14 (87%)	0	15 (94%)	15 (94%)
$\lambda$ + B cell lymphomas	12	10 (83%)	8 (67%)	11 (92%)	8 (67%)
Reactive	12	0	0	0	0
IgH PCR negative	5	4	2	4	0

**Table 3** PCR detection of monoclonal, rearranged immunoglobulin genes in DNA extracted from randomly selected formalin fixed, paraffin wax embedded tissue samples

Sample	Diagnosis	Igκ PCR	Igλ PCR	IgH PCR
1	MZL	P	M	M
2	MZL	M	P	M
3	MZL	P	M	M
4	MZL	P	P	M
5	FL	P	P	M
6	FL	P	P	P
7	FL	M	P	P
8	SMZL	M	P	M
9	DLBCL	M	P	M
10	DLBCL	M	M	M
11	NLPHD	P	P	P
12	Reactive	P	P	P
Total		5/12	3/12	8/12
Igκ/Igλ PCR			7/12	
Igκ/Igλ/IgH PCR			9/12	

DLBCL, diffuse large B cell lymphoma; FL, follicular lymphoma; M, monoclonal; MZL, marginal zone lymphoma; NLPHD, nodular lymphocyte predominant Hodgkin's lymphoma; P, polyclonal; SMZL, splenic marginal zone lymphoma.

#### Lambda light chain (Vλ-Fr3/Jλ1)

Clone	Fr3	CDR3	Jλ2
G78-A6 (2/6)*	T	CAGACCTGGGGCACTGGCGGA	GTATTGGCGGA
G78-D6 (2/6)*	T	GCAGCATGGGATGACAGCCTGAGTGGCCCT	TTATGTCTTCGGA
G78-B6 (2/6)*	T	CAAGCATCAGACAGCAGTGGTACTT	ATGTCTTCGGA

#### Lambda light chain (Vλ-Fr3/Jλ2)

	Fr3	CDR3	Jλ3B
G208-A5 (6/6)*	C	AGCTCATATTCAAGCAGCTACACTAG	GGTCTTCGGCGGA

#### Kappa light chain

	Fr3	CDR3	Jκ5
G4010-D7 (8/8)*	GACGATTCAACTTCACCATCAGCAGCCTGAAGATTGCAACTTATTACTGT	CAACAGCTTAATAGTTACCTC	GATCACCTTCGCCAA

**Figure 3** Light chain sequences derived from PCR products (primer sequences are not included). The asterisk denotes the number of identical clones with sequence shown. The nucleotide shown in lower case is the only putative somatic mutation.

Fourteen of the 16 B cell lymphomas expressing Igκ and 10 of the 12 expressing Igλ were successfully amplified with Igκ primers and eight of the 12 expressing Igλ were amplified with Igλ primers.

#### Routine paraffin wax embedded samples

All DNA extracts from routine, formalin fixed, paraffin wax embedded samples yielded products within the expected size range, suggesting amplification of specific Ig light chain products (figs 1 and 2). Six of 12 showed a monoclonal pattern (five with Igκ and three with Igλ primers) and the remainder a polyclonal pattern (table 3). Ten samples were B cell lymphomas that were expected to show a monoclonal pattern, and two (one reactive and one nodular lymphocyte predominant Hodgkin's lymphoma) were expected to show a polyclonal pattern.

#### Sensitivity

Tumour clones were detected clearly to a dilution of 10% and weakly to 5% of tumour cells using both Igκ and Igλ primers (data not shown).

#### Specificity

The sequences of amplified products are shown in fig 3. Comparison of these sequences with those from VBASE confirms amplification of Igκ and Igλ variable regions. The Igκ and Igλ

(Vλ-FR3/Jλ2) products were confirmed to be monoclonal because all clones sequenced were identical from each primer set. The Igλ (Vλ-FR3/Jλ1) products yielded three different sequences (two clones each). This may reflect amplification of one or two alleles of the dominant clone and additional background clones. Cloning and sequencing were performed without size selection on total amplicates that would be expected to contain products from reactive B cells in addition to the tumour clone.

#### DISCUSSION

We have developed PCR methods for the analysis of Igκ and Igλ light chain genes suitable for the detection of expanded B cell clones, including some lymphomas not amplifiable using conventional IgH PCR analysis. Efficient amplification was achieved using DNA extracts from either fresh/frozen or paraffin wax embedded tissue samples. Igκ and Igλ light chain amplification will thus be useful to complement conventional IgH PCR clonality analysis and to study lymphoproliferative diseases with biased expression of light chains, such as human herpesvirus 8 positive multicentric Castlemann's disease, which almost invariably expresses Igλ.<sup>8</sup>

Amplification of products of the expected size range using each primer set suggested that products were specific and this was confirmed by sequencing. Sensitivities of 5–10% tumour

**Take home messages**

- When used in conjunction with heavy chain analysis, Ig light chain PCR results in improved detection of B cell monoclonality using routine histological specimens
- It can provide additional clone specific markers for the study of the biology of B cell tumours

cells were lower than figures published for IgH PCR (typically 1–5%) although there is much variation built into such experiments owing to the rough estimation of tumour cell and competing reactive B cell numbers, and variability in precise fit of primers to individual rearrangements targeted. Nevertheless, the overall assessment of the techniques using a range of lymphomas suggests appropriate sensitivity.

Heteroduplex analysis of PCR products was found to be essential for the efficient resolution of monoclonal bands within polyclonal backgrounds, especially with Ig $\lambda$  primers, probably because of the limited size heterogeneity of products.<sup>10</sup>

This investigation shows that immunoglobulin light chain PCR techniques permit the detection of monoclonality in a high proportion of B cell lymphomas, including some that are not amplifiable using IgH PCR, using routine tissue samples. The Ig $\kappa$  PCR is particularly useful because B cell lymphomas expressing either  $\kappa$  or  $\lambda$  light chain may be amplified. The protocols described should offer improvements over existing techniques for the analysis of paraffin wax processed samples because they amplify smaller fragments<sup>3–6</sup> or target a wider range of germline fragments.<sup>7</sup>

“The Ig $\kappa$  PCR is particularly useful because B cell lymphomas expressing either  $\kappa$  or  $\lambda$  light chain may be amplified”

Improvements to the primer design, such as the inclusion of  $\kappa$  deleting element primers that target rearrangements with deleted  $\kappa$  regions,<sup>11</sup> which are frequent in Ig $\lambda$  expressing cells, and redesign of Ig $\lambda$  primers to permit amplification in a single tube, would improve the overall efficiency of the analysis.

These protocols will expand the possibilities for the detection of monoclonal B cell populations and provide clone specific markers for the study of the distribution and progression of B cell tumours.

**ACKNOWLEDGEMENT**

This work was partly supported by the Cancer Research Campaign.

**Authors' affiliations**

**T C Diss, H X Liu, M Q Du, P G Isaacson**, Histopathology Department, Royal Free and University College Medical School, University Street, London WC1E 6JJ, UK

Accepted for publication 21 August 2001

**REFERENCES**

- 1 **Diss TC**, Pan L. Polymerase chain reaction in the assessment of lymphomas. *Cancer Surv* 1997;**30**:21–44.
- 2 **Siotos N**, Bagg A, Michaud GY, *et al*. Polymerase chain reaction versus Southern blot hybridization. Detection of immunoglobulin heavy-chain gene rearrangements. *Diagn Mol Pathol* 1995;**4**:8–13.
- 3 **Diss TC**, Pan L, Peng H, *et al*. Sources of DNA for detecting B cell monoclonality using PCR. *J Clin Pathol* 1994;**47**:493–6.
- 4 **Wan JH**, Trainor KJ, Brisco MJ, *et al*. Monoclonality in B cell lymphoma detected in paraffin wax embedded sections using the polymerase chain reaction. *J Clin Pathol* 1990;**43**:888–90.
- 5 **Kuppers R**, Zhao M, Rajewsky K, *et al*. Detection of clonal B cell populations in paraffin-embedded tissues by polymerase chain reaction. *Am J Pathol* 1993;**143**:230–9.
- 6 **Kuppers R**, Willenbrock K, Rajewsky K, *et al*. Detection of clonal lambda light chain gene rearrangements in frozen and paraffin-embedded tissues by polymerase chain reaction. *Am J Pathol* 1995;**147**:806–14.
- 7 **Gong JZ**, Zheng S, Chiarle R, *et al*. Detection of immunoglobulin kappa light chain rearrangements by polymerase chain reaction. An improved method for detecting clonal B-cell lymphoproliferative disorders. *Am J Pathol* 1999;**155**:355–63.
- 8 **Du MQ**, Liu H, Diss TC, *et al*. Kaposi sarcoma-associated herpesvirus infects monotypic (IgM lambda) but polyclonal naive B cells in Castleman disease and associated lymphoproliferative disorders. *Blood* 2001;**97**:2130–6.
- 9 **Trainor KJ**, Brisco MJ, Story CJ, *et al*. Monoclonality in B-lymphoproliferative disorders detected at the DNA level. *Blood* 1990;**75**:2220–2.
- 10 **Garcia-Sanz R**, Lopez-Perez R, Langerak AW, *et al*. Heteroduplex PCR analysis of rearranged immunoglobulin genes for clonality assessment in multiple myeloma. *Haematologica* 1999;**84**:328–35.
- 11 **Bertoni N**, Zucca E, Genini D, *et al*. Immunoglobulin light chain kappa deletion rearrangement as a marker of clonality in mantle cell lymphoma. *Leuk Lymphoma* 1999;**36**:147–50.



## Improvements to B cell clonality analysis using PCR amplification of immunoglobulin light chain genes

T C Diss, H X Liu, M Q Du, et al.

*Mol Pathol* 2002 55: 98-101

doi: 10.1136/mp.55.2.98

---

Updated information and services can be found at:

<http://mp.bmj.com/content/55/2/98.full.html>

---

*These include:*

### References

This article cites 11 articles, 4 of which can be accessed free at:

<http://mp.bmj.com/content/55/2/98.full.html#ref-list-1>

### Email alerting service

Receive free email alerts when new articles cite this article. Sign up in the box at the top right corner of the online article.

---

### Notes

---

To request permissions go to:

<http://group.bmj.com/group/rights-licensing/permissions>

To order reprints go to:

<http://journals.bmj.com/cgi/reprintform>

To subscribe to BMJ go to:

<http://group.bmj.com/subscribe/>