

ORIGINAL ARTICLE

Squamous metaplasia induced by transfection of human papillomavirus DNA into cultured adenocarcinoma cells

T Kinjo, K Kamiyama, K Chinen, T Iwamasa, K Kurihara, T Hamada

J Clin Pathol: Mol Pathol 2003;**56**:97–108

Background/Aim: It has been reported previously in cases of adenosquamous carcinoma of the lung in Okinawa, a subtropical island 2000 km south of mainland Japan, that the squamous cell carcinoma components were positive for human papillomavirus (HPV) by non-isotopic in situ hybridisation (NISH). The adenocarcinoma cells adjacent to the squamous cell carcinoma components were enlarged and also positive for HPV. This is thought to indicate that after adenocarcinoma cells are infected with HPV, they undergo morphological changes, and that “squamous metaplasia” follows. In this present study, the effects of HPV transfection into adenocarcinoma cells were examined. The relation between the region expressing the HPV gene and squamous metaplasia was also studied.

Methods: Plasmid pBR322 containing HPV type 16 (HPV-16) was transfected into cultured colonic adenocarcinoma (DLD-1) and lung adenocarcinoma (PC-14) cells using the calcium phosphate method. Neomycin was used as a selection marker. The presence of HPV E1, E2, E4, E5, E6, E7, L1, and L2 mRNAs and also transglutaminase 1, involucrin, cyclin dependent kinases (CDKs), cyclins, caspases, apoptosis inducing factor, DNase γ , Fas, and Fas ligand mRNAs in HPV transfected cells was investigated by means of reverse transcription polymerase chain reaction (RT-PCR). The G0–G1 cell population was analysed by flow cytometry. Morphological examination under light and electron microscopes was also carried out.

Results: The virus transfected cells showed squamous metaplasia when they were injected into severe combined immunodeficient mice, expressing the high molecular weight keratin (Moll’s number 1 keratin) and involucrin molecules immunohistochemically, and involucrin and transglutaminase 1 mRNAs by RT-PCR. The squamous metaplasia was most conspicuous in the HPV transfected DLD-1 cell when compared with HPV transfected PC-14 cells. Squamous metaplasia was most clearly demonstrated in one HPV transfected DLD-1 cell clone, which expressed not only E2 but also E6–E7 fusion gene mRNA. Viral L1 mRNA expression was absent in HPV transfected cell clones, and was not related to squamous metaplasia. The growth rate of HPV transfected cells was reduced. Transfection of the virus into the cultured adenocarcinoma cells increased the G0–G1 cell population greatly, as assessed by flow cytometer analysis. Furthermore, in the virus transfected cells, apoptosis was also observed by means of the terminal deoxynucleotidyl transferase mediated dUTP biotin nick end labelling method.

Conclusion: HPV transfection into adenocarcinoma cells induced clear squamous metaplasia. One of the HPV transfected cell clones that expressed E2 and E6–E7 fusion gene mRNA showed the squamous metaplasia particularly clearly, and apoptosis was also demonstrated.

See end of article for authors’ affiliations

Correspondence to:
Dr T Kinjo, Department of Pathology, Ryukyu University School of Medicine, 207 Uehara, Nishihara, Okinawa 903-0215, Japan;
igbucho@jum-u-ryukyu.ac.jp

Accepted for publication
3 November 2002

Metaplasia is the process whereby one type of differentiated cell is replaced by another, usually in response to abnormal stimuli.¹ “Squamous metaplasia” of the bronchial mucosa and “intestinal metaplasia” of the gastric mucosa are well known and commonly accepted phenomena. As reported previously^{2–3} in adenosquamous carcinoma cases of the lung, the squamous cell carcinoma components are positive for human papillomavirus (HPV) by non-isotopic in situ hybridisation (NISH). The adenocarcinoma cells adjacent to the squamous cell carcinoma components are enlarged, and also show positivity for HPV by NISH. The production of high molecular weight keratin (HMK) and involucrin molecules (markers of the cornified squamous cell) is induced in the squamous cell carcinoma components and also in the adjacent enlarged cells.^{3–12} This is thought to indicate the transition from adenocarcinoma to squamous cell carcinoma. We postulated³ that after adenocarcinoma cells are infected with HPV, they undergo morphological changes, expressing HMK and involucrin, and that squamous metaplasia follows. Metaplasia is the change in the differentiation pathway to which the stem cell progeny commit. Squamous metaplasia is the common adaptive response to chronic irritations in non-neoplastic tissue. A similar process of squamous metaplasia is common in neoplasms, particularly in adenocarcinomas of the

lung, uterus, etc. Metaplasia is said to occur in tumours, but the term metaplasia is better used for changes in non-tumorous tissues. The squamous differentiation is generally used when a squamous cell carcinoma component is seen in the adenocarcinoma.¹³ However, in our report squamous metaplasia is used to indicate the transition from adenocarcinoma cell to squamous carcinoma cell morphology, including the expression of the appropriate molecular markers—for example, cytokeratins, involucrin, and transglutaminase I.

Tinsley *et al* reported HPV type 1 transgenic mice in which the E1–E4 protein was detected in the upper suprabasal layers of the skin in paws and tail.¹⁴ A 1.7 kb RNA sequence corresponding to the E6 and E7 transcript was prominent in tails. In such transgenic mice the epidermis of the tail showed

Abbreviations: BPV, bovine papillomavirus; CDK, cyclin dependent kinase; HMK, high molecular weight keratin; HPV, human papillomavirus; NISH, non-isotopic in situ hybridisation; PAGE, polyacrylamide gel electrophoresis; PAS, periodic acid Schiff; PBS, phosphate buffered saline; PCNA, proliferation cell nuclear antigen; PMSF, phenylmethylsulphonyl fluoride; RT-PCR, reverse transcription polymerase chain reaction; SCID, severe combined immunodeficient; SDS, sodium dodecyl sulfate; TUNEL, terminal deoxynucleotidyl transferase mediated dUTP biotin nick end labelling

Table 1 Primers and probes used for detection of human papilloavirus type 16 (HPV-16) DNA by the polymerase chain reaction

	Primer/Probe	Position	Product (bp)
HPV-16 E1			
Sense (16E1-a)	5'-ACCATGGCTGATCCTGCAG-3'	862-880	2087
Antisense (16E1-b)	5'-TGATACAGCCAGTGTGGCA-3'	2930-2947	
HPV-16 E2			
Sense (16E2-a)	5'-TGGAAACACATGCGCCTAGA-3'	2851-2870	471
Sense (16E2-a')	5'-ATGGAGACTCTTGCCAACG-3'	2755-2774	566
Antisense (16E2-b)	5'-ACCCGCATGAACTCCCAT-3'	3302-3321	
HPV-16 E4			
Sense (16E4-a)	5'-AACGAAGTATCCTCTCTGAA-3'	3361-3381	201
Antisense (16E4-b)	5'-GACAGTGCTCCAATCCTCACT-3'	3542-3561	
HPV-16 E5			
Sense (16E5-a)	5'-CATCCACAACATTACTGGCG-3'	3868-3887	228
Antisense (16E5-b)	5'-CACATGCACGCTTTTAATTAC-3'	4074-4095	
HPV-16 E6			
Sense (16E6-a)	5'-CACCAAAGAGAAGTCAATG-3'	86-106	413
Sense (16E6-a')	5'-GATGGGAATCCATATGCTGA-3'	269-289	240
Antisense (16E6-b)	5'-TCGACCGGTCCACCGACCCCT-3'	488-508	
Probe	5'-GCCACTGTCTCTGAAGAAAAGC-3'	427-449	
HPV-16 E7			
Sense (16E7-a)	5'-CCAGAGACAAGTATCTCTAC-3'	610-630	171
Sense (16E7-a')	5'-ATGCATGGAGATACACCTACA-3'	562-582	119
Antisense (16E7-b)	5'-GTGTGTGCTTTGTACGCACAAC-3'	759-780	
Probe	5'-TAACCTTTTGTGCAAGTGTACTCTACGCTTCG-3'	725-758	
HPV-16 L1			
Sense (16L1-a)	5'-TGCTAGTCTTATGCAGCAA-3'	6029-6048	151
Sense (16L1-a')	5'-GGAGGACTGGAATTTGGTC-3'	6833-6852	321
Antisense (16L1-b)	5'-ATTTACTGCAACATTGGTAC-3'	6160-6179	
Antisense (16L1-b')	5'-TTACAGCTTACGTTTTTTCGT-3'	7133-7154	
HPV-16 L2			
Sense (16L2-a)	5'-TGCAGAACTGGAGGGCATT-3'	4756-4775	368
Antisense (16L2-b)	5'-CTAGAGGTTAATGCTGGCCT-3'	5105-5124	

The primers and probes for the E6 regions of HPV-6, HPV-16, and HPV-18 were the same as those reported by McNicol *et al.*²⁵

hyperplasia, with both hyperkeratosis and focal parakeratosis. Moreover, based on histological examination of certain human skin lesions, such as verruca vulgaris and condyloma acuminatum, HPV has been found to cause keratinisation of the skin. It is considered that a region of the viral genome causes cell differentiation.

"In adenocarcinoma cases of the lung, the squamous cell carcinoma components are positive for human papillomavirus by non-isotopic in situ hybridisation"

In our study, transfection of HPV-16 into cultured adenocarcinoma cells was carried out. The choice of HPV-16 reflects the previous finding² that squamous metaplasia was more apparent in the case of HPV-16 transfected cells than in HPV-6 and HPV-18 transfected cells. Furthermore, the relation between regions expressing HPV gene mRNA and squamous metaplasia is examined, as is the possibility that HPV plays an important role in squamous metaplasia.

MATERIALS AND METHODS

Cells

The cultured human intestinal adenocarcinoma (moderately differentiated) cell line, DLD-1, and human lung adenocarcinoma (poorly differentiated) cell line, PC-14, were obtained from the Cancer Research Resources Bank, National Institute of Health, Japan (Setagaya, Tokyo, Japan). DLD-1 cells are adherent, and PC-14 cells were weakly adherent to culture dishes. Both were cultured in RPMI 1640 medium supplemented with 10% fetal bovine serum (Bio Whittaker, Walkersville, Maryland, USA) at 37°C in a humidified atmosphere of 5% CO₂/95% air. The characteristics of both cells have been reported elsewhere.^{3, 15} We tested further characteristics of the cells. Overexpression of Bax and Bcl-2 was not demonstrated immunohistochemically. Sequence analysis of the p53 gene in DLD-1 revealed the mutation at Ser241Phe (C936T), as reported previously¹⁶ (data not shown), but no mutation was demonstrated in PC-14 cells. CaSki cells,¹⁷ which are HPV-16 infected epidermoid orvical carcinoma cells, were used as a control.

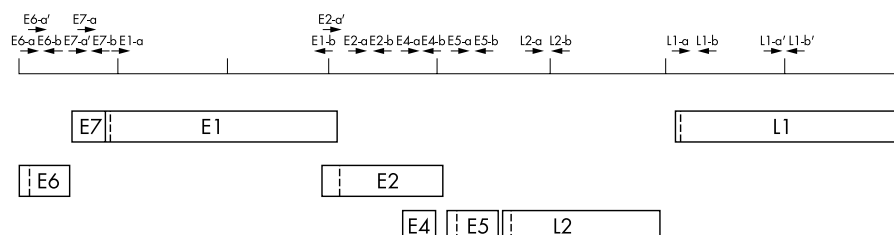


Figure 1 Positions of the primers used for the detection of human papillomavirus type 16 DNAs by the polymerase chain reaction.

HPV DNA

HPV-16 in plasmid pBR322 was obtained from the Japanese Cancer Research Resources Bank (National Institute of Health, Division of Genetic Resources, Shinjuku, Tokyo, Japan) with the permission of Dr Zur Hausen. Neomycin was used as a selection marker. The neomycin resistant gene in pMC1neo poly A⁺ was obtained from Stratagene (La Jolla, California, USA).

The reconstructed plasmid pBR322, which has HPV-16 at the Hind III site and the neomycin resistance gene at the BamHI site, was prepared as reported previously.²

Transfection of HPV DNA into cultured cells

Using Chen and Okayama's calcium phosphate method,¹⁸ HPV DNA was transfected into DLD-1 and PC-14 cells and 5 × 10⁵ cells were seeded in a 10 cm culture dish containing 10 ml of fresh growth medium and incubated overnight at 37°C in 3% CO₂. The HPV DNA–CaCl₂ was added dropwise to the dish containing the growing cells, swirled to mix well, and incubated for 10 hours at 37°C in 5% CO₂.

HPV DNA–CaCl₂ was made as follows: HPV DNA (1 mg/ml in TE buffer (10 mM Tris/HCl, pH 7.5, containing 1 mM EDTA)) was added to 0.25 M CaCl₂ in sterile distilled water. Then, 0.5 ml 2× HBS buffer (280 mM NaCl, 1.5 mM Na₂HPO₄, 50 mM HEPES, pH 7.1) was added dropwise to the mixture with constant swirling, and left at room temperature for 20 minutes.

After treatment with 15% glycerol, HPV transfected cells were re-fed with fresh growth medium and incubated at 37°C for 24 hours in 5% CO₂. Thereafter, the cells were submitted to a selection process in 200 µg/ml of G418 (Geneticin; Gibco BRL, Grand Island, New York, USA). Four weeks later, a single cell was subcultured from the surviving colonies using 96 well multiplates.

Thirteen clones of HPV transfected DLD-1 cells and 12 clones of HPV DNA transfected PC-14 cells were obtained. These HPV transfected cells were cultured. After 10 passages, their characteristics were examined.

Growth curve and cell cycle analysis

A 0.2 ml aliquot of 10⁶/ml HPV transfected cells was seeded into 35 mm culture dishes. After 1, 2, 3, 5, 7, 10, 14, and 20 days the cells were counted using a haemocytometer after trypan blue staining, and the growth curve was obtained.

For the cell cycle analysis, the DNA content was measured by means of flow cytometry (Becton Dickinson, Mountain View, California, USA). HPV transfected cells were harvested and fixed in cold 70% ethanol for 30 minutes on ice. After washing in phosphate buffered saline (PBS), pH 7.0, cells were pelleted and resuspended in 1 ml of 50 µg/ml propidium iodine in PBS containing 20 µg/ml of RNase and 0.05% Triton X-100 for a further 30 minutes, and then diluted in PBS containing 1% bovine serum albumin and immediately analysed by flow cytometer.

Injection of HPV transfected cells into SCID mice

HPV transfected DLD-1 cells and PC-14 cells (10⁷ cells) were injected subcutaneously into the backs of severe combined immunodeficient (SCID) mice¹⁹ (CB17/Icr-Scid Jcl), which were obtained from Japan Bio Co (SEAC Yoshitomi Co, Fukuoka, Japan) four weeks after birth. All animals used in our study were maintained and conditioned in the Institute for Animal Experiments, Ryukyu University School of Medicine for one week before the experiments, and all experimental protocols were approved by the Animal Care and Use Committee, Ryukyu University. The SCID mice into which HPV transfected DLD-1 and PC-14 cells were injected were previously injected intraperitoneally with 0.3 ml of 30 times diluted anti-asialo GM₁ ganglioside antibody¹⁹ (Wako, Tokyo, Japan) three times/day.

Table 2 Primers used for characterisation of the human papillomavirus transfected cells

	Primer/Probe	Product (bp)
Caspase 3 ³⁰		
Sense	5'-ACATGGAAGCGAATCAATGGACTC-3'	687
Antisense	5'-AAGGACTCAAATTCTGTTGCCACC-3'	
Caspase 8 ³¹		
Sense	5'-AGTGAAACACAGACTTTGGACAAAG-3'	792
Antisense	5'-TCAATCAGAAGGGGAAGACAAGTTT-3'	
Caspase 9		
Sense	5'-AAGACCATGGGTTTGAGGTG-3'	257
Antisense	5'-AGCCCACTGCTCAAAGATGT-3'	
AIF ³²⁻³⁴		
Sense	5'-GGGCACAGAAGTGATTAAC	318
Antisense	5'-GTAGAGCGTGCTGTAGCT	
DNase I ²¹		
Sense	5'-CTGAAGATCGCAGCCTCAACATC-3'	735
Antisense	5'-CAGTTGGTCACTCAGGCCATAG-3'	
DNase γ		
Sense	5'-CCCATACTGATGGAGAAGCTG-3'	607
Antisense	5'-CATCCAGGGCCTCTCTTTCAG-3'	
DNA fragmentation factor 45		
Sense	5'-CAGCCAGTGCCTTGGGGTCTCC-3'	389
Antisense	5'-GGAGGACCTCCAGATGCTTGT-3'	
Fas ²⁸		
Sense	5'-AGACTGCGTGCCTGCCAAGA-3'	413
Antisense	5'-CAGGATTTAAGGTGGACTATT-3'	
Fas L (ligand) ²⁸		
Sense	5'-TTCTTCCCTGTCCAACCTCTG-3'	177
Antisense	5'-AAAACATCACAAAGGAGACACA-3'	
bcl-2 ²⁸		
Sense	5'-TTGTGGCCTCTTTGAGTTCG-3'	332
Antisense	5'-TACTGCTTTAGTGAACCTTTT-3'	
bax ²⁸		
Sense	5'-ACCAAGAAGCTGAGCGAGTGT-3'	332
Antisense	5'-ACAAACATGGTCCAGGCTGC-3'	
Transglutaminase I ²⁷		
Sense	5'-AAGGAGACCAAGAAGG-3'	315
Antisense	5'-CTGTAACCCAGAGCCTTC-3'	
Involucrin		
Sense	5'-ACTCCTAGAAGCCTTACTT-3'	408
Antisense	5'-AGGATTCTGGTAGCTCAACTA-3'	
p16 ²⁹		
Sense	5'-AACGCACCGAATAGTTACGGT-3'	420
Antisense	5'-TGTAGGACCTTCGGTGACTGA-3'	
p16 ^β		
Sense	5'-GCAGCCGCTTCTAGAAGA-3'	408
Antisense	5'-TGTAGGACCTTCGGTGACTGA-3'	
Cyclin D1 ³⁵		
Sense	5'-CTGTCTGGAGCCCGTGAAAAAG-3'	405
Antisense	5'-GAAGTTGTGGGGCTCTCAGGTT-3'	
Cyclin D2 ³⁵		
Sense	5'-TTGGTGGGGTCCCTACTCCGAAG-3'	268
Antisense	5'-TCAGAGACAGCTTCTCCCGTCT-3'	
Cyclin D3 ³⁵		
Sense	5'-CTGTCTGCGTCCCCACCCGAAAG-3'	540
Antisense	5'-TTGGGGCGTGGGCTGGAGCTGGT-3'	
Cyclin E ³⁷		
Sense	5'-CCGGCTTCGTCTCATAGGC-3'	323
Antisense	5'-CTCGCCATTCTTCGTCTCG-3'	
CDK2 ³⁶		
Sense	5'-ATGGAGAAGTCCAAAAGGTGAA-3'	402
Antisense	5'-AAGCAGATTCTGAGGTTAAGGC-3'	
CDK4 ³⁶		
Sense	5'-ATGGCTGCCACTCGATGAACCC-3'	540
Antisense	5'-GTACCAGAGCGTAACCACCAAGG-3'	
CDK6 ³⁶		
Sense	5'-ATGGAGAAGGACGGCCTGTGCCG-3'	313
Antisense	5'-AGTCTTGATCGACATGTCAAACA-3'	

CDK, cyclin dependent kinase.

Morphological examination

HPV transfected cultured cells on the dishes were examined under a phase contrast microscope. HPV transfected cultured cells and tumours, which were obtained four weeks after injection of transfected cells into mice, were fixed in 10% sodium phosphate buffered formalin, pH 7.2. After fixation,

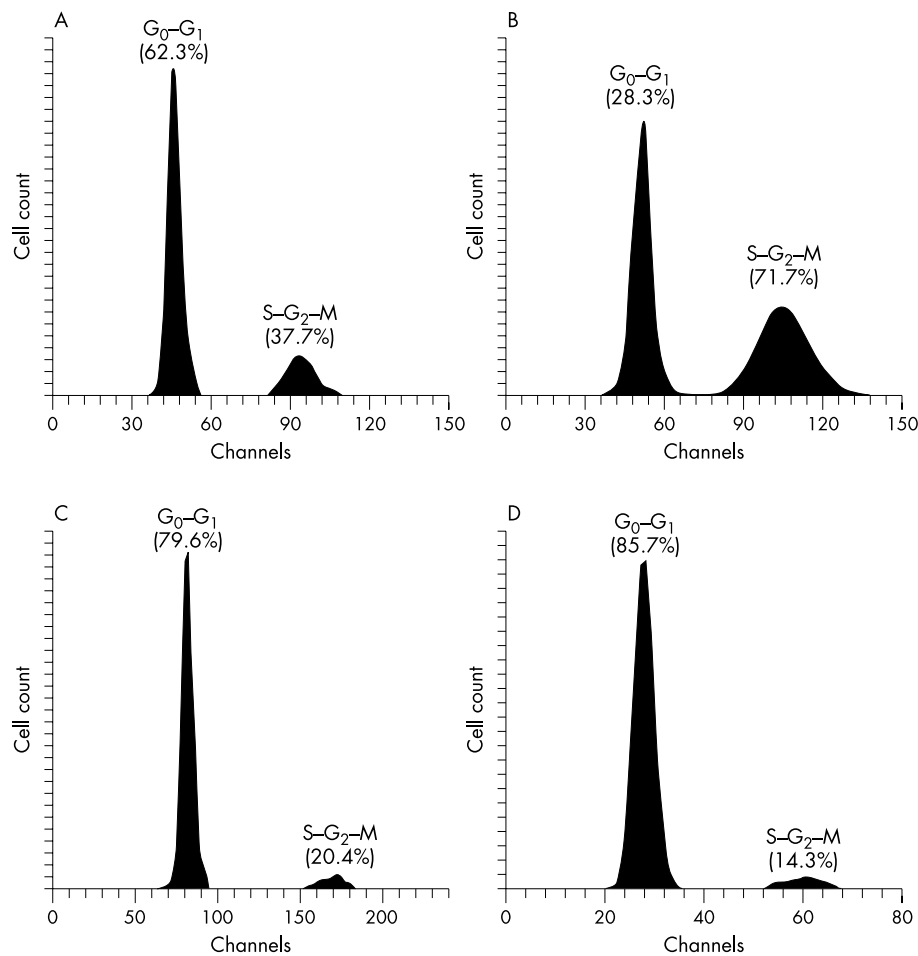


Figure 2 Flow cytometric analysis. (A) G₀-G₁ cell population of cultured DLD-1 cells without human papillomavirus (HPV) DNA transfection (control); 62.3% were G₀-G₁ phase cells; 37.7% were S-G₂-M phase cells. (B) G₀-G₁ cell population of cultured PC-14 cells without HPV DNA transfection (control); only 28.3% of cells were G₀-G₁ phase; 71.7% were S-G₂-M phase cells. (C) G₀-G₁ cell population of HPV-16 transfected DLD-1 cells (16Da cells); 79.6% of cells were G₀-G₁ phase cells; 20.4% were S-G₂-M phase cells. (D) G₀-G₁ cell population of HPV-16 transfected PC-14 cells (16Pa cells); 85.7% of cells were G₀-G₁ phase; 14.3% were S-G₂-M phase cells.

HPV transfected cells and tumours were subjected to routine histological examination. Haematoxylin and eosin, periodic acid Schiff (PAS), and alcian blue staining were performed on the cultured cells on the dishes and 4 µm dewaxed sections of the tumour cells. The antibody to involucrin (a marker for keratinocyte differentiation) was obtained from Sigma (St Louis, Missouri, USA), and antibody to high molecular keratin (HMK) (Moll's¹⁰ No. 1, 5, 10, 14), proliferation cell nuclear antigen (PCNA), Ki-67, and p53 protein from Dako (Carpinteria, California, USA). Anticaspase 4 antibody was from Wako (Osaka, Japan). Immunohistochemical studies were carried out by the avidin-biotin-peroxidase method. Apoptosis was detected using the TUNEL (terminal deoxynucleotidyl transferase mediated dUTP biotin nick end labelling) method. The TUNEL method was performed with a Takara in situ apoptosis detection kit (Takara, Otsu, Japan), according to the manufacturer's instructions.

NISH was performed on all specimens using HPV-16 biotin labelled probes from the ENZO PathoGene in situ HPV tissue hybridisation kit (Farmingdale, New York, USA). NISH was carried out according to Cooper and colleagues²⁰ and the manufacturer's instructions. Biotin was detected using alkaline phosphatase labelled streptavidin. 5-Bromo-4-chloro-3-indolyl phosphate and nitrobluetetrazolium were used as substrate and chromogen, respectively. For the immunohistochemical studies, TUNEL method, and NISH, non-HPV transfected DLD-1 and PC-14 cells were used as controls.

For electron microscopic examinations, samples were fixed in buffered 2.5% glutaraldehyde and postfixed in 1% osmium tetroxide, then embedded in Epon 812 resin in the usual manner. Ultrathin sections were observed using the Hitachi H7500 electron microscope (Hitachi Ltd, Tokyo, Japan).

Purification of involucrin and western blot analysis

Involucrin molecules were isolated according to the method of Schmiedeknecht and colleagues²¹ and Yaffe *et al.*¹² HPV transfected cultured cells were washed twice with PBS, pH 7.2, containing 20mM EDTA, once with PBS containing 20mM EDTA and 0.2 mM phenylmethylsulphonyl fluoride (PMSF), and were then harvested by scraping. The cells were collected in PBS containing 20mM EDTA and pelleted by centrifugation; they were then disrupted by two freeze-thaw cycles in 10 volumes of 10mM Tris/HCl, pH 7.4, 10mM EDTA, containing 0.3 mg/ml PMSF, 5 µg/ml leupeptin, and 0.1 µl/ml pepstatin. The sample was centrifuged at 10 000 ×g for 10 minutes at 4°C. The supernatant was collected and 1/10 volume of 100% trichloroacetic acid (TCA) was added. Thereafter, the pellet was obtained by centrifugation at 27 000 ×g for 20 minutes at 4°C, and dissolved in 9M urea, 2% Triton X-100, and 5% 2-mercaptoethanol. After sonication (one minute, three times), a 1/4 volume of 10% sodium dodecyl sulfate (SDS) was added. The samples were electrophoresed on an 8.5% acrylamide gel, transferred to a nitrocellulose membrane, and incubated with anti-involucrin antibody. Then they were

Table 3 Detection of mRNAs in human papillomavirus type 16 (HPV-16) transfected DLD-1 and PC-14 cells

	Virus transfected cells					
	DLD-1*	16Da	16Db	CaSki	PC-14†	16Pa
HPV						
E1	-	-	-	+	-	-
E2	-	+++	-	+	-	-
E4	-	+	+	+++	-	-
E5	-	+	-	+	-	+
E6	-	+++	+	++	-	+
E7	-	+++	-	+	-	+
L1	-	-	-	+++	-	-
L2	-	-	-	-	-	+
E6-E7	-	+++	-	-	-	-
E6-E2	-	-	-	-	-	-
E6-L1	-	-	-	-	-	-
Bax	+	+	+	-	-	++
Bcl2	+	+	+	-	++	++
Fas	+	+	+	-	++	++
Fas L	-	-	-	-	-	-
DNase γ	+	++	+	-	-	-
AIF	+	++	+	-	-	-
Caspase 3	+++	+++	+++	-	++	+
Caspase 8	+	++	-	-	++	+
Caspase 9	+++	+++	+++	+++	++	++
CDK2	+	+	-	-	+++	+++
CDK4	-	-	-	-	-	-
CDK6	+	+	+	-	+++	+++
Cyclin D1	+	+	+	-	+++	+++
Cyclin D2	-	-	-	-	-	-
Cyclin D3	++	++	-	-	+	+
Cyclin E	-	-	-	-	-	-
Transglutaminase I	-	++	-	-	-	-
DNA fragmentation factor 45	+++	+	+	+	+++	+++
DNase I	+++	+++	++	+	-	-
Involucrine	-	++	-	++	-	-
p16 α	-	-	-	-	-	-
p16 β	-	-	-	-	-	-

CaSki, CaSki cell infected with HPV-16; -, not detected; for HPV mRNA, +, ++, and +++: positive and the density of the band was similar to that for 10, 50, and 100 copies of HPV-16 in pBR322, respectively; in other columns, +, ++, and +++: positive at 1 \times , 10 \times , and 100 \times dilution of the sample, respectively.

*Non-HPV transfected DLD-1 cells (control); †Non-HPV transfected PC-14 cells (control).

visualised by incubating with H₂O₂ and 3,3' diaminobenzidine, after incubation with a second antibody (antimouse rabbit immunoglobulin; Dako, Kyoto, Japan) labelled with peroxidase.

In the case of HPV transfected cell tumours in the SCID mice, the samples were homogenised using a Polytron homogeniser (Kinematica GmbH, Steinhofhalde, Switzerland) in PBS containing 20mM EDTA and 0.2mM PMSEF, and then centrifuged for five minutes at 15 000 $\times g$. The samples were disrupted by two freeze-thaw cycles, and were processed by the same procedures as described above.

Purification of the keratin molecules and western blot analysis

The keratin molecules were extracted according to the method of Franke and colleagues²² and Katagata *et al.*⁹ The HPV transfected culture cells were washed twice with PBS and scraped with a rubber policeman. The tumours obtained from SCID mice were minced. Five to 10 volumes of 10mM Tris/HCl, pH 7.4, containing 10mM EDTA, 0.3 mg/ml PMSEF, 5 μ g/ml of leupeptin, and 0.1 μ l/ml of pepstatin were added to the samples, which were then sonicated three times for four minutes each, followed by centrifugation for 10 minutes at 10 000 $\times g$. After repeating the above procedure three times, the pellets were dissolved with equal volumes of 9M urea, 10% 2-mercaptoethanol, and 4% NP40, at 37°C for six hours. Thereafter, the samples were analysed using two dimensional polyacrylamide gel electrophoresis (PAGE). After SDS-PAGE was carried out according to the method of Laemmli,²³ two dimensional PAGE was performed as described by O'Farrel,²⁴

using Pharmalyte (Amersham Pharmacia Biotech AB, Uppsala, Sweden), pH 3–10. After electrophoresis, the samples were transferred on to nitrocellulose membranes and the membranes were stained with anti-HMK (Moll's¹⁰ numbers 1, 5, 10, 14) antibody (Dako, Carpinteria, California, USA).

Detection of HPV mRNA by RT-PCR

Total RNA was extracted from the samples according to the standard acid/guanidium/phenol/chloroform method. A sample (the cells in 10 cm dish) was homogenised with 500 μ l of solution (4M guanidium thiocyanate, 25mM sodium citrate, 0.5% N-lauroylsarcosinate, and 0.1% 2-mercaptoethanol, pH 7.0), then 50 μ l of 2M sodium acetate, 500 μ l of water

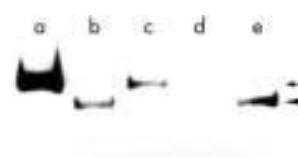


Figure 3 The bands of PCR products. Lane a, 735 bp band (arrow) of human papillomavirus type 16 (HPV-16) in reconstructed plasmid pBR322 using E4a/E5b primer set (positive control). Lane b, 695 bp band (arrowhead) of HPV-16 transcript using E6a/E7b primer set (16Da cells). Lane c, 735 bp band (arrow) of HPV-16 transcript using E4a/E5b primer set (16Da cells). Lane d, distilled water (negative control). Lane e, 695 bp band (arrowhead) of HPV-16 transcript using E6a/E7b primer set (positive control CaSki cells).

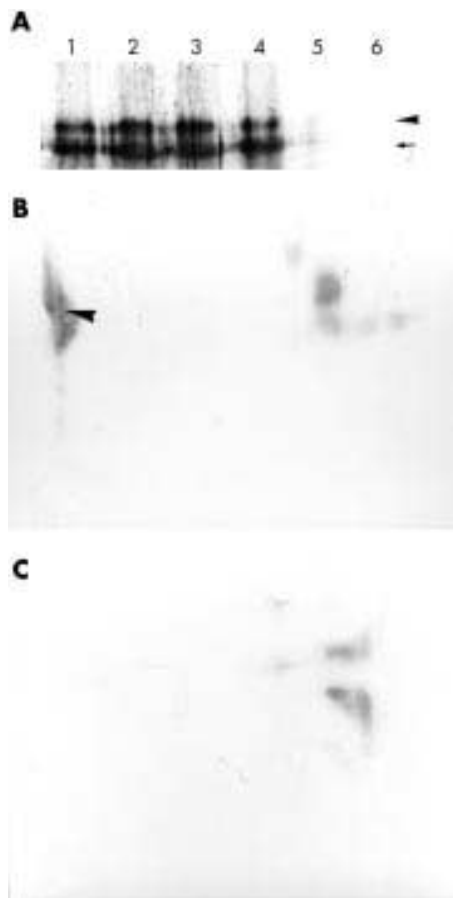


Figure 4 (A) Western blot analysis of 52 kDa (arrow) and 70 kDa (arrowhead) involucrin molecules extracted from 16Da cells. Lane 1, squamous epithelium from the skin of the chest obtained at necropsy; lane 2, squamous epithelium of the oesophagus obtained at necropsy; lane 3, 16Da cells; lane 4, CaSki cells (positive control); lane 5, non-human papillomavirus (HPV) transfected DLD-1 cells; lane 6, distilled water (negative control). (B) Moll's number 1 keratin (arrowhead) was demonstrated using two dimensional electrophoresis (16Da cells). (C) Control non-HPV transfected DLD-1 cells. Moll's number 1 keratin was not demonstrated.

saturated phenol, and 100 μ l of chloroform/isoamylalcohol (24/1 (vol/vol)), pH 4.5, was added. The sample was cooled on ice for 15 minutes, and centrifuged at 10 000 $\times g$ at 4°C for 20 minutes. A 600 μ l aliquot of ice cold isopropanol was added to the aqueous phase, which was then kept in a -20°C freezer for two hours. The RNA was obtained by centrifugation at 10 000 $\times g$ for 30 minutes. The sample was digested by means of DNase (Takara). The glyceraldehyde-3-phosphate dehydrogenase (GAPDH) gene was amplified by primers designed around introns to produce a fragment of 2086 bp from DNA and 234 bp from RNA.⁶ The sense primer AGGTGAAGGTCG-GAGTCAACG (nucleotide position, 1460–1480) and antisense primer GCTCCTGGAAGATGGTGATGG (nucleotide position, 3542–3412) and Takara Ex Taq DNA polymerase (Takara) were used for the PCR. The genomic 2086 bp GAPDH DNA was not amplified. Then the RNA was reverse transcribed at 42°C for 60 minutes in a 20 μ l reaction volume using a First Strand cDNA synthesis kit (Clontech Lab, Palo Alto, California, USA), according to the manufacturer's instructions. cDNA was incubated at 95°C for five minutes to inactivate the reverse transcriptase, and used as template DNA in the PCR amplification of the HPV-16 E1, E2, E4, E5, E6, E7, L1, and L2 regions. The primers and probes for these HPV E1, E2, E4, E5, E6, E7, and L1 or L2 regions are shown in table 1 and fig 1. The PCR conditions were the same as reported previously.^{7, 26}

Detection of other mRNAs of interest by RT-PCR

Using cDNA reverse transcribed from RNA as described above, transglutaminase I,²⁷ involucrin, Fas, Fas ligand, bax, bcl-2,²⁸ p16 α , and p16 β ,²⁹ caspase 3,³⁰ caspase 8,³¹ caspase 9,³⁰ AIF,^{32–34} DNase γ ,³⁵ DNA fragmentation factor 45, cyclin D1, D2, and D3, cyclin A,³⁶ cyclin E,³⁷ and cyclin dependent kinases (CDKs) 2, 4, and 6³⁶ were detected by the RT-PCR method. The RT-PCR primers for transglutaminase I, Fas, Fas ligand, bax, bcl-2, p16 α and p16 β , caspase 3, 8, and 9, DNase γ , cyclin D1, D2, and D3, cyclin A and E, CDK2, 4, and 6 were the same as in previous reports. Table 2 lists the primers and probes used. The PCR conditions were similar to those described earlier.^{27–30, 35–37} The template cDNA concentrations of the samples were adjusted according to the RT-PCR product concentration of GAPDH.

Negative controls for PCR analysis

To prevent false positive results, the sample preparation and the PCR were carried out by two authors independently (TK and KK). Furthermore, distilled water was used as a negative control and no positive reaction was obtained.

Sequence analysis of PCR products

PCR products were extracted from the agarose gel. The extracted DNA was cloned into T-vector prepared from pBlue-script II (Stratagene), according to the method of Marchuk *et al.*³⁸ The pBluescript plasmid was digested with EcoRV, and incubated with Taq (Cetus-Takara) (1 U/ μ g plasmid) using standard buffer conditions: 10mM Tris/HCl, pH 8.3, 50mM KCl, 1.5mM MgCl₂, and 200 μ g/ml bovine serum albumin in the presence of 2mM dTTP for two hours at 70°C. Sequence analysis was carried out using the Hitachi SQ 5500 DNA sequencer (Hitachi).

Restriction enzyme cleavage and blot hybridisation

Between 10 and 20 μ g of DNA were digested with the appropriate restriction endonuclease, and after electrophoresis on a 0.8% agarose gel, the DNA was denatured and transferred to a nitrocellulose filter. Filters were hybridised with HPV DNA.³⁹

RESULTS

Growth curve and cell cycle analysis

Thirty HPV-16 transfected DLD-1 cell clones and 12 HPV-16 transfected PC-14 cell clones were obtained. All types of HPV transfected DLD-1 cells adhered to the culture dishes, as they had before HPV transfection. In contrast, PC-14 cells, which were only weakly adherent before the viral transfection, became tightly adherent to the dishes.

The growth rate of HPV transfected cells was reduced. Before HPV transfection, the G0–G1 phase cell populations in the DLD-1 and PC-14 cells were less than 62.3% and 28.3%, respectively (fig 2A,B), and these cell populations increased after transfection. Among both the DLD-1 and PC-14 HPV transfected cell clones, the G0–G1 cell populations were particularly high in the 16Da clones, which expressed E2 and E6–E7 fusion gene mRNA, and 16Pa clones, which expressed E6 and E7 gene mRNA, reaching about 80% (79.6% and 85.7%, respectively) (fig 2C,D). However, cells expressing only one of E2, E6, or E7 had slightly lower G0–G1 cell populations of about 70%.

Detection of HPV E1, E2, E4, E5, E6, L1, and L2 mRNA, in addition to mRNA of other molecules of interest

The HPV-16 transfected 16Da clone (one of the DLD-1 cell clones), which showed the clearest squamous metaplasia, in addition to all of the HPV-16 transfected DLD-1 and PC-14 cell clones that also showed squamous metaplasia were analysed for mRNA (table 3). In the present HPV-16 transfected cells (16Da, 16Db, and 16Pa), the previously reported splicing sites^{21, 40–42} at 226, 409, and 526 were not demonstrated. In the case of 16Da cells, using the primer pair 16E6-a and 16E7-b,

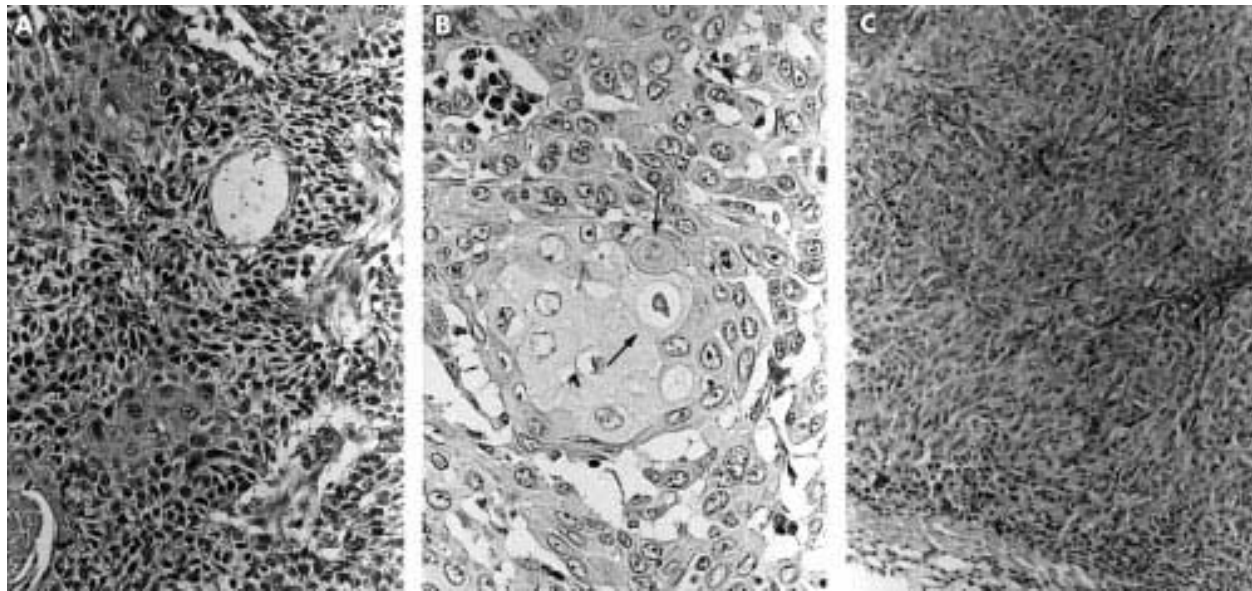


Figure 5 Histological observation of human papillomavirus (HPV) transfected cells. (A) HPV-16 transfected DLD-1 cell (16Da cells). Squamous metaplasia was clearly demonstrated. Haematoxylin and eosin staining; original magnification, $\times 200$. (B) Intercellular bridges (arrows) in the HPV-16 transfected DLD-1 cell (16Da cells); original magnification, $\times 400$. (C) HPV-16 transfected DLD-1 cells (16Db cells) expressing only the E4 and E6 mRNAs. Squamous metaplasia was observed, but prickle cell differentiation was not clear; original magnification, $\times 200$.

the expected 695 bp product was amplified (fig 3). However, the primer pair 16E7-a and 16E2-b produced no corresponding PCR product. Using the primer pairs 16E6-a/16E7-b and 16E4-a/16E5-b the expected PCR products were amplified (fig 3). The L1 region was not amplified in 16Da. One HPV transfected cell, 16Db, which expressed only E4 and E6 mRNA, and not L1 mRNA, was used for further investigations.

The expression of CDK and cyclin mRNA in HPV transfected cells was similar to that seen in non-HPV transfected cells.

Western blot analysis of involucrin and keratin

After acrylamide electrophoresis, the purified involucrin was transferred to nitrocellulose membranes, and the bands were visualised using anti-involucrin antibody. Involucrin molecules of 52 kDa and 70 kDa were detected (fig 4A) from all of the HPV-16 transfected cells and control CaSki cell samples.

Keratin molecules were analysed using two dimensional acrylamide gel electrophoresis. Moll's number 1 keratin was detected (fig 4B,C) in all of the HPV-16 transfected cells and control CaSki cell extracts. In the 16Da cell (HPV transfected DLD-1 cell), which expressed E2 and E6–E7 fusion gene mRNAs, the expression of involucrin and Moll's number 1 keratin was higher than that seen in the other HPV transfected clones. Involucrin and Moll's number 1 keratin were not detected in the non-viral transfected control DLD-1 and PC-14 cells.

Morphological examination

After transfection with HPV, both the DLD-1 and PC-14 cultured cells became larger, with abundant cytoplasm, and were tightly adherent to the dishes. Three to four weeks after injection of these HPV transfected cells into the back of SCID mice tumours formed. The average size of the tumours was about 1.0 cm³. Histopathologically, the tumours were moderately differentiated squamous cell carcinoma, showing abundant cytoplasm with intercellular bridges (figs 5, 6A–C). Immunohistochemical staining for HMK and involucrin in these tumour cells was strong (fig 6D), but mucin was not demonstrated by either alcian blue or PAS staining. Without exception, all of the HPV transfected cells showed squamous metaplasia. The squamous metaplasia was most clearly demonstrated in 16Da cells, which expressed E2 and E6–E7 fusion

gene mRNA. The copy number of the transfected virus was not strictly related to the squamous metaplasia. The cells expressing only one of the E2, E6, or E7 genes showed slightly lower HMK and involucrin expression. The L1 and L2 regions were not transcribed in the virus transfected cells, although in the case of CaSki cells L1 region mRNA was detected by RT-PCR. The HPV transfected PC-14 cells also showed squamous metaplasia, with basal cell differentiation, and the number of prickle cells was not so pronounced. In the HPV transfected PC-14 cell clones, no E6–E7 fusion gene mRNA expressing clone was obtained.

The tumour cells that expressed the E2 and E6–E7 fusion gene mRNAs expressed HMK and involucrin more strongly than those expressing only one of E2, E4, E5, E6, or E7, although no keratin pearl formation was seen in the HPV transfected cells. Many desmosomes were clearly demonstrated by means of electron microscopy (fig 7). Some cells displayed morphological characteristics of apoptosis, including extensive and pronounced chromatin condensation.

Immunohistochemically, the centre of the HPV transfected cell tumour nests (16Da) did not stain for Ki-67 or PCNA, although these molecules were demonstrated in the marginal zone of the nests (data not shown). Using the TUNEL method, large numbers of apoptotic cells were demonstrated in the virus transfected cells (fig 8A,B). Apoptotic cells were frequently seen among cells expressing E2, E6, and E7 mRNAs. However, immunohistochemical staining for the p53 protein was weak in HPV transfected DLD-1 cells, similar to that seen in non-HPV transfected cells.

Analysis of the physical state of HPV DNA in virus transfected cells⁴⁰

In all HPV transformed cells, integrated HPV was demonstrated by in situ hybridisation using Cooper's criteria²⁰ (fig 9A,B).

The hybridisation pattern of undigested HPV-16 DNA was compared with DNA that has been digested with a "no cut" restriction endonuclease (Hind III or Bgl II), with a "single cut" enzyme (Bam HI), and with a multicut enzyme (Pst I or Eco RI). On Southern analysis the episomal HPV band (7.9 kilobase band after Bam HI digestion) was not demonstrated (data not shown). The HPV transfected cells showed the presence of integrated forms of the virus.

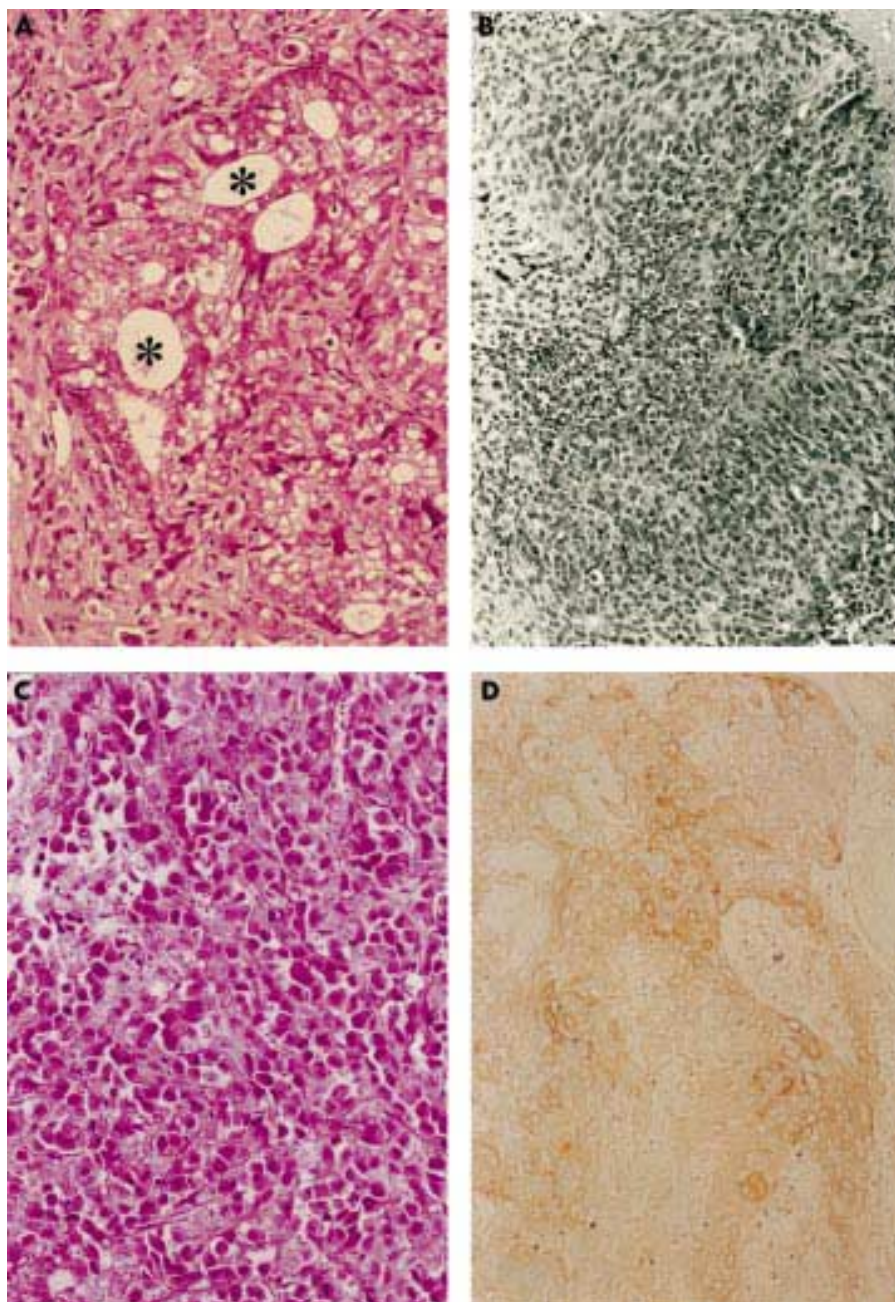


Figure 6 (A) Control DLD-1 cells without human papillomavirus (HPV) transfection. The asterisks indicate the tubular structure; original magnification, $\times 200$. (B) HPV-16 transfected PC-14 cells (16Pa cells). Squamous metaplasia was demonstrated, but basal cell-like cells were observed; original magnification, $\times 200$. (C) Control PC-14 cells without HPV transfection. Irregular tubular or trabecular patterns were observed; original magnification, $\times 200$. (D) Demonstration of high molecular weight keratin (HMK). HMK was strongly demonstrated in the HPV-16 transfected DLD-1 cells (16Da cells) with squamous metaplasia; original magnification, $\times 200$.

DISCUSSION

HPV transfected cells exhibited low growth in culture, with a high G0–G1 phase cell population, and showed clear “squamous metaplasia” morphologically when they were injected into SCID mice. The induction of HMK (Moll’s¹⁰ number 1 keratin), involucrin, and transglutaminase I, which are markers of well differentiated keratinocytes,^{4 11 12 43–47} was demonstrated in the HPV transfected tumour cells. The tumour cells had abundant cytoplasm and numerous intercellular bridges, and resembled prickle cells or basal cells. It has been reported previously² that squamous metaplasia is more clearly demonstrated in HPV-16 transfected DLD-1 cells (16Da) than other HPV type transfected cells. However, in the case of PC-14 cells, “basal cell differentiation” was frequently observed, and prickle cells were less frequently found. It is thought that the poorly differentiated characteristics of the PC-14 cells, which were established from poorly differentiated adenocarcinoma of the lung, and the expression pattern of HPV mRNA might influence the differentiation of the

metaplastic cells. In our present study, no PC-14 cell clone was obtained that expressed HPV E2 and E6–E7 fusion gene mRNA simultaneously.

“The combined expression of the E2 and E6–E7 fusion gene products might be a factor for squamous metaplasia”

Among the HPV transfected cells, the HPV-16 transfected DLD-1 cell (16Da), which expressed E2 and E6–E7 fusion gene mRNA, showed squamous metaplasia particularly clearly. However, keratin pearl formation was not demonstrated in our present experiments and it is possible that keratinising lesions may be formed by further differentiation factors,^{4 43 48 49} including calcium ions or a growth factor.^{9 20 40} Choo *et al* reported that calcium increased the differentiation of HPV-16 positive CaSki cells.⁴³ The influence of different culture conditions needs to be examined further.

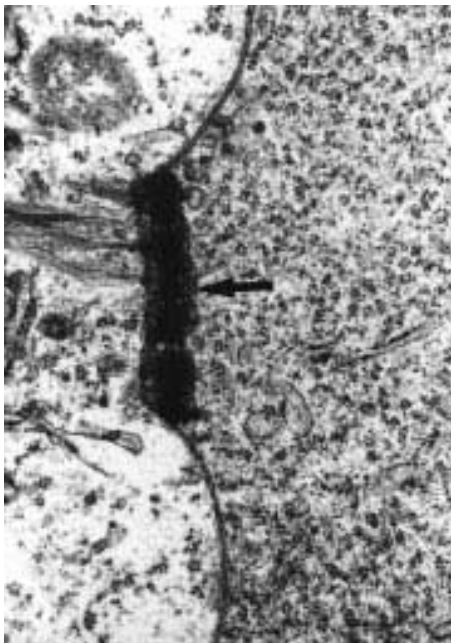


Figure 7 Electron microscopic demonstration of a desmosome. The arrow indicates the desmosome (16Da cells). Original magnification, $\times 11\,000$.

It has been reported that HPV genomes are transcribed into multiple and differentially spliced mRNAs.^{6 40 41 45 50-52} Transcription is subject to complex control by viral and cell functions. In the present HPV transfected cells, clear squamous metaplasia was seen in the clones that expressed the E2 and E6-E7 fusion genes simultaneously. In these cases, in addition to fusion transcripts of E6-E7, small amounts of E2-E6 and E4-E5 were also detected, but L1 and L2 mRNA was not. The expression of E4 and E5 was variable among the cell lines and was not thought to correlate with squamous metaplasia. In our present cell lines, only cells expressing single E6 or E7 transcripts did not produce pronounced squamous metaplasia. Therefore, the combined expression of the E2 and E6-E7 fusion gene products might be a factor for

squamous metaplasia. Products from the E2 gene region have been implicated previously in the regulation of HPV gene transcription.^{41 50 53} Integration of the viral genome generally results in the disruption of the E2 open reading frame, which encodes a transactivator of viral transcription.⁴² However, DLD-1 clone 16Da, which expressed E2 mRNA without disruption, showed clear squamous metaplasia. The transactivator E2 protein and E6-E7 fusion protein might be important for HPV induced squamous metaplasia, although the amount of E6-E7 and E2 transcripts did not influence the development of squamous metaplasia. L1 and L2 were not necessary for the development of squamous metaplasia. Furthermore, a pronounced degree of apoptosis was demonstrated in the 16Da cell clone. E6 and E7 were considered necessary for apoptosis, as reported elsewhere.^{45 54 55} In 16Da cells, DNase γ and AIF were strongly expressed, although caspase 3, caspase 9, and DNase 1 mRNA values were similar among all HPV transfected and non-transfected control cells. The Fas ligand was not expressed, but a small amount of Fas mRNA was detected in a few clones of HPV transfected DLD-1 and PC-14 cells. The bcl-2 and bax mRNA values were unchanged among all cells. It was thus considered that the strong expression of DNase γ in 16Da cells might depend on a unique pathway, different to the caspase 3 and caspase 9 associated route. AIF was strongly expressed, but caspase 9 expression was lower than that of caspase 8. Furthermore, in one of the HPV-16 transfected cells DNase γ was expressed, but caspase 8 was not detected. The expression of caspase 8 was variable among the cell clones, and small amounts of it were also detected in the non-virus transfected control DLD-1 and PC-14 cells.

It is well known that the cervical epithelium infected with HPV develops intraepithelial neoplasia. Most of the intraepithelial neoplasia of the cervix occurs in the transitional zone, which is thought to be composed of squamous metaplastic cells. Sun *et al* reported that cultured normal endocervical epithelial cells infected with HPV-16 formed an epithelium resembling squamous metaplasia.⁴⁷ However, neither detailed examinations of HPV transcripts nor molecular biology were performed. Merrick and colleagues⁵⁶ also reported the altered expression of differentiation markers in the squamous epithelial cells immortalised by HPV-16 and HPV-18. In our report, we used HPV-16 infected CaSki cells as a control. HeLa

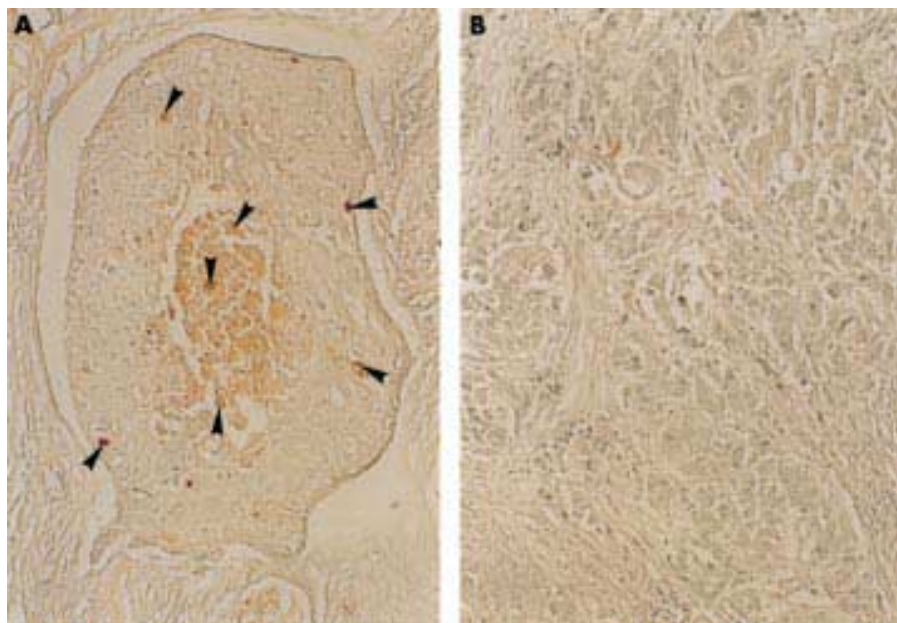


Figure 8 (A) Apoptotic cells (arrowheads) were demonstrated in 16Da cells using the terminal deoxynucleotidyl transferase mediated dUTP biotin nick end labelling method. Original magnification, $\times 200$. (B) Control DLD-1 cells; apoptotic cells were not demonstrated.

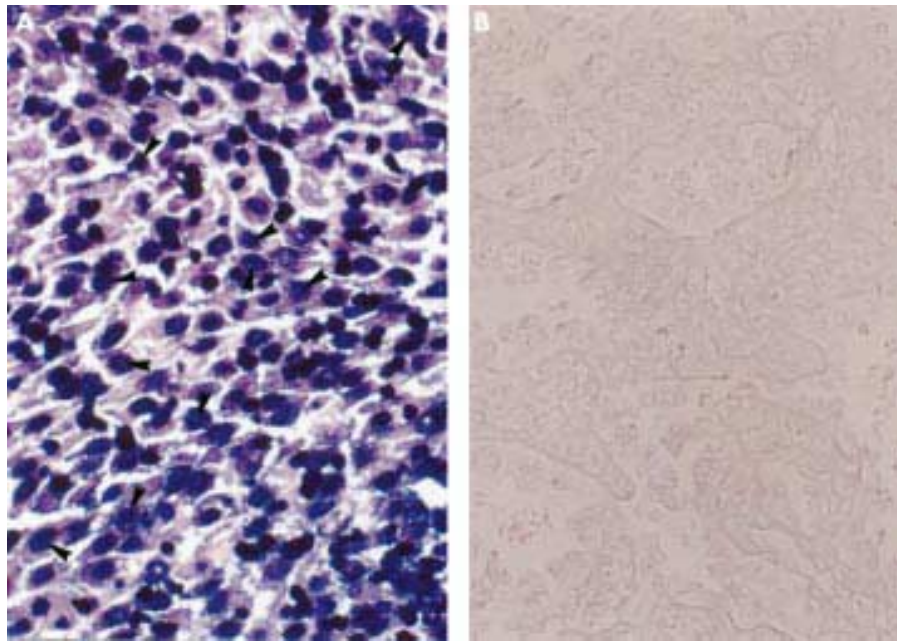


Figure 9 (A) Non-isotopic in situ hybridisation of human papillomavirus type 16 (HPV-16). Integrated HPV signals (arrowheads) according to Cooper's criteria were demonstrated in the nuclei of the 16Da cells. All the nuclei of the 16Da cells showed positive signals. Original magnification, $\times 200$. (B) An HPV signal was not demonstrated in the control non-HPV transfected DLD-1 cells. Original magnification, $\times 200$.

cells infected with HPV-18 should also be analysed for comparison. Furthermore, in the case of uterine endometrioid carcinoma, it is well known that squamous cell metaplasia or "squamous differentiation" is frequent.¹³ Therefore HPV infection in endometrioid carcinoma should also be examined, and indeed cultured endometrioid carcinoma cells are another appropriate candidate for HPV induced experimental squamous metaplasia. But squamous metaplasia is a change in the normal differentiation process of the progenitor cell through a different pathway of differentiation. In our study, cultured cancer cells were used, but normal tissue—for example, bronchial epithelium—should be used for an in vivo experiment. HPV infection was demonstrated with adenocarcinoma cells as reported previously,³ but HPV infected adenocarcinoma cells showed an increased area of cytoplasm and developed into adeno-squamous carcinoma. The HPV integration site in chromosomes varies from case to case, although Cannizzaro and colleagues^{57, 58} have reported integration at the chromosome 3p fragile site. It is thought that HPV infects epithelial cells and that the viral gene, especially the E6, E7 and E2 products,³⁹ induces the abrogation of the cell cycle,^{46, 60} and that in this process squamous metaplasia is induced, and dysplasia and neoplasia develop through further gene alterations. Recently Graham and colleagues⁴⁹ have indeed reported that additional genetic alterations in HPV infected cells are

thought to be required for the development of a carcinogenic genotype.

"A high degree of apoptosis was demonstrated in those transfected cell clones that simultaneously expressed both E2 and E6–E7 fusion gene mRNA, but not L region mRNA"

Furthermore, it is well known that bovine papillomavirus (BPV) E2 proteins can repress E6 and E7 expression.^{61, 62} Although overexpression of the BPV E2 protein decreases the transcription of HPV-16 from the P97 promoter, under identical conditions, the HPV-16 E2 protein has also been shown to activate the transcription of HPV from the same promoter.⁶³ Furthermore, Sanchez-Perez and colleagues⁵⁵ and Bouvard and colleagues⁶³ have reported that the HPV-16 E2 protein increases E6 and E7 mRNA values, and that an increase in the E7 protein concentration induces apoptotic cell death.^{45, 55} Reintroduction of HPV-16 E2 protein into an HPV-16 transformed cervical carcinoma cell line (SiHa cell), which contains the integrated HPV 16 DNA with a disrupted E2 gene, results in a decrease in growth rate.⁵⁵ Furthermore, the E6 and E7 genes are reported to induce changes in the expression of cell growth proteins, and also in involucrin expression.³⁸ In our present studies, apoptotic cells were demonstrated by HPV genome transfection. A high degree of apoptosis was demonstrated in those transfected cell clones that simultaneously expressed both E2 and E6–E7 fusion gene mRNA, but not L region mRNA.

Further studies are needed to elucidate which sequences in the viral genome—E2, E6, or E7—are the most important factors for squamous metaplasia.

Take home messages

- Human papillomavirus (HP) transfection into adenocarcinoma cells induced clear squamous metaplasia
- Squamous metaplasia was particularly clear in one of the HPV transfected cell clones, which expressed E2 and E6–E7 fusion gene mRNA, and apoptosis was also demonstrated
- Further studies are needed to elucidate which sequences in the viral genome—E2, E6, or E7—are the most important factors for squamous metaplasia

Authors' affiliations

T Kinjo, K Kamiyama, K Chinen, T Iwamasa, Department of Pathology, Ryukyu University School of Medicine, 207 Uehara, Nishihara, Okinawa 903-0215, Japan

K Kurihara, Department of Anatomy, Ryukyu University School of Medicine

T Hamada, Department of Pathology and Cell Biology, University of Occupational and Environmental Health, Kitakyushu 807-8555, Japan

REFERENCES

- 1 **Yeldandi A**, Kaugman DG, Reddy JK. Cell injury and cellular adaptations. In: Damjanov I, Linder J, eds. *Anderson's pathology*, 10th ed. St Louis: Mosby Year Books, 1990:357–86.
- 2 **Nakazato I**, Hirayasu T, Kamada Y, et al. Carcinoma of the lung in Okinawa, Japan: with special reference to squamous cell carcinoma and squamous metaplasia. *Pathol Int* 1997;**47**:659–72.
- 3 **Tsuhako K**, Nakazato I, Hirayasu T, et al. Human papillomavirus DNA in adenocarcinoma of the lung. *J Clin Pathol* 1998;**51**:741–9.
- 4 **Bloor BK**, Lan S, Shirlaw PJM, et al. Gene expression of differentiation-specific keratins (4/13 and 1/10) in normal buccal mucosa. *Lab Invest* 1998;**78**:787–95.
- 5 **Dexter DL**, Barbosa JA, Calabresi P. N, N-Dimethyl-formamide induced alterations of cell cultured human colon carcinoma cells. *Cancer Res* 1979;**39**:1020–5.
- 6 **Ercolani L**, Florence B, Denaro M, et al. Isolation and complete sequence of glyceraldehyde-3-phosphate dehydrogenase gene. *J Biol Chem* 1988;**263**:15335–41.
- 7 **Frattini MG**, Hurst SD, Lim HB, et al. Abrogation of a mitotic checkpoint by E2 proteins from oncogenic human papillomaviruses correlates with increased turnover of the p53 tumor suppressor protein. *EMBO J* 1997;**16**:318–31.
- 8 **Jetten AM**, Kim JS, Sacks PG, et al. Inhibition of growth and squamous-cell differentiation markers in cultured human head and neck squamous carcinoma cells by all-trans retinoic acid. *Int J Cancer* 1990;**45**:195–202.
- 9 **Katagata Y**, Aso K, Sato M, et al. Occurrence of differentiated keratin peptide (K1) in cultured human squamous cell carcinomas. *Biochem Biophys Res Commun* 1992;**182**:1440–5.
- 10 **Moll R**, Franke WW, Schiller DL. The catalog of human cytokeratins: patterns of expression in normal epithelia, tumors and culture cells. *Cell* 1982;**31**:11–24.
- 11 **Watanabe S**, Ichikawa E, Takahashi H, et al. Changes of cytokeratin and involucrin in squamous cell carcinomas of the skin during progression to malignancy. *Br J Dermatol* 1995;**132**:730–9.
- 12 **Yaffe MB**, Murthy S, Eckert RL. Evidence that involucrin is a covalently linked constituent of highly purified cultured keratinocyte cornified envelopes. *J Invest Dermatol* 1993;**100**:3–9.
- 13 **Silverberg SG**, Kurman RJ. Endometrial carcinoma. In: Silverberg SG, Kurman RJ, eds. *Atlas of tumor pathology. 3rd Series Fascicles. Tumors of the uterine corpus and gestational trophoblastic disease*. Washington, DC: Armed Forces Institute of Pathology, 1991:47–89.
- 14 **Tinsley JM**, Fisher C, Searle PF. Abnormalities of epidermal differentiation associated with expression of the human papillomavirus type 1 early region in transgenic mice. *J Gen Virol* 1992;**73**:1251–60.
- 15 **Yano S**, Nokihara H, Hanibuchi M, et al. Model of malignant pleural effusion of human lung adenocarcinoma in SCID mice. *Oncol Res* 1997;**9**:537–79.
- 16 **Rodrigues NR**, Rowan A, Smith MEF, et al. p53 mutations in colorectal cancer. *Proc Natl Acad Sci U S A* 1990;**87**:7555–9.
- 17 **Pattillo RA**, Hussa RO, Story MT, et al. Tumor antigen and human chorionic gonadotropin in CaSki cells: a new epidermoid cervical cancer cell line. *Science* 1997;**196**:1456–8.
- 18 **Chen C**, Okayama H. High-efficiency transformation of mammalian cells by plasmid DNA. *Mol Cell Biol* 1987;**7**:2745–52.
- 19 **Dorshkind K**, Polack SB, Bosma MJ, et al. Natural killer (NK) cells are present in mice with severe combined immunodeficiency (scid). *J Immunol* 1985;**134**:3798–801.
- 20 **Cooper K**, Herrington CS, Stickland JE, et al. Episomal and integrated human papillomavirus in cervical neoplasia shown by non-isotopic *in situ* hybridisation. *J Clin Pathol* 1991;**44**:990–6.
- 21 **Schmiedeknecht G**, Kerkhoff C, Orso E, et al. Isolation and characterization of 14.5-Kda trichloroacetic-acid-soluble translational inhibitor protein from human monocytes that is upregulated upon cellular differentiation. *Eur J Biochem* 1996;**242**:339–51.
- 22 **Franke WW**, Schiller DL, Moll R, et al. Diversity of cytokeratins. Differentiation specific expression of cytokeratin polypeptides in epithelial cells and tissues. *J Mol Biol* 1981;**153**:933–59.
- 23 **Laemmli UK**. Cleavage of structural proteins during the assembly of the head of bacteriophage T4. *Nature* 1970;**227**:680–8.
- 24 **O'Farrell PH**. High resolution two-dimensional electrophoresis of proteins. *J Biol Chem* 1975;**250**:4007–21.
- 25 **McNicol P**, Paraskevas M, Guijon F. Variability of polymerase chain reaction-based detection of human papillomavirus DNA is associated with the composition of vaginal microbial flora. *J Med Virol* 1994;**43**:184–200.
- 26 **Hirayasu T**, Iwamasa T, Kamada Y, et al. Human papillomavirus DNA in squamous cell carcinoma of the lung. *J Clin Pathol* 1996;**49**:810–17.
- 27 **Duvic M**, Nelson DC, Annarella M, et al. Keratinocyte transglutaminase expression varies in squamous cell carcinomas. *J Invest Dermatol* 1994;**102**:462–9.
- 28 **Agarwal R**, Talati M, Lambert W, et al. Fas-activated apoptosis and apoptosis mediators in human trabecular meshwork cells. *Exp Eye Res* 1999;**68**:583–90.
- 29 **Kawano MM**, Mahmoud MS, Ishikawa H. Cyclin D1 and p16^{INK4A} are preferentially expressed in immature and mature myeloma cells, respectively. *Br J Haematol* 1997;**99**:131–8.
- 30 **Flaws JA**, Kugu K, Trabovich AM, et al. Interleukin-1 β -converting enzyme-related proteases (IRPs) and mammalian cell death: dissociation of IRP induced oligonucleosomal endonuclease activity from morphological apoptosis in granulosa cells of the ovarian follicle. *Endocrinology* 1995;**136**:5042–53.
- 31 **Tepper CG**, Seldin MF. Modulation of caspase-8 and FLICE-inhibitory protein expression as a potential mechanism of Epstein-Barr virus tumorigenesis in Burkitt's lymphoma. *Blood* 1999;**94**:1727–37.
- 32 **Susin SA**, Zamzami N, Castedo M, et al. Bcl-2 inhibits the mitochondrial release of an apoptogenic protease. *J Exp Med* 1996;**184**:1331–41.
- 33 **Susin SA**, Lorenzo HK, Zamzami N, et al. Mitochondrial release of caspase-2 and -9 during the apoptotic process. *J Exp Med* 1999;**189**:381–93.
- 34 **Susin SA**, Lorenzo HK, Zamzami N, et al. Molecular characterization of mitochondrial apoptosis-inducing factor. *Nature* 1999;**397**:441–6.
- 35 **Shimada O**, Ishikawa H, Tosaka-Shimada H, et al. Detection of deoxyribonuclease 1 along the secretory pathway in paneth cells of human small intestine. *J Histochem Cytochem* 1998;**46**:833–40.
- 36 **Ohtsuki F**, Yamamoto M, Nakagawa T, et al. Granulocyte-macrophage colony-stimulating factor abrogates transforming growth factor- β 1-mediated cell cycle arrest by up-regulating cyclin D2/Cdk6. *Br J Haematol* 1997;**98**:520–7.
- 37 **Marone M**, Scambia G, Giannelli C, et al. Analysis of cyclin E and cdk2 in ovarian cancer: gene amplification and RNA overexpression. *Int J Cancer* 1998;**75**:34–9.
- 38 **Marchuk D**, Drumm M, Saulino A, et al. Construction of T-vectors, a rapid and general system for direct cloning of unmodified PCR products. *Nucleic Acids Res* 1990;**19**:1154.
- 39 **Lehn H**, Cilla LL, Marziona F, et al. Physical state and biological activity of human papillomavirus genomes in precancerous lesions of the female genital tract. *J Gen Virol* 1988;**69**:187–96.
- 40 **Barker CC**, Phelps WC, Lindgren V, et al. Structural and transcriptional analysis of human papillomavirus type 16 sequences in cervical carcinoma cell lines. *J Virol* 1987;**61**:962–71.
- 41 **Sherman L**, Alloul N. Human papillomavirus type 16 expresses a variety of alternatively spliced mRNAs putatively encoding the E2 protein. *Virology* 1992;**191**:953–9.
- 42 **Smolkin D**, Prokoph H, Wettstein FO. Oncogenic and non-oncogenic human genital papillomaviruses generate the E7 mRNA by different mechanisms. *J Virol* 1989;**63**:1441–7.
- 43 **Choo CK**, Rorke EA, Eckert RL. Differentiation-independent constitutive expression of the human papillomavirus type 16 E6 and E7 oncogenes in the CaSki cervical tumour cell line. *J Gen Virol* 1994;**75**:1139–47.
- 44 **Cooper D**, Schermer A, Sun T-T. Biology of the disease. Classification of human epithelia and their neoplasms using monoclonal antibodies to keratins: strategies, applications, and limitations. *Lab Invest* 1985;**52**:243–56.
- 45 **Stöppler H**, Stöppler MC, Johnson E, et al. The E7 protein of human papillomavirus type 16 sensitizes primary human keratinocytes to apoptosis. *Oncogene* 1999;**17**:1207–14.
- 46 **Tommasino M**, Crawford L. Human papillomavirus E6 and E7: proteins which deregulate the cell cycle. *Bioessays* 1995;**17**:509–18.
- 47 **Sun Q**, Tsutsumi K, Kelleher MB, et al. Squamous metaplasia of normal and carcinoma *in situ* of HPV 16-immortalized human endocervical cells. *Cancer Res* 1992;**52**:4254–60.
- 48 **Azuma M**, Kawamata H, Kasai Y, et al. Effects of retinoic acid on morphological features and biological markers of a neoplastic human salivary intercalated duct cell line in culture. *Cancer Res* 1988;**48**:7219–25.
- 49 **Graham DA**, Souhten SA, McDicken IW, et al. Interphase cytogenetic evidence for distinct genetic pathways in the development of squamous neoplasia of the uterine cervix. *Lab Invest* 1998;**78**:289–96.
- 50 **Doorbar J**, Parton A, Hartley K, et al. Detection of novel splicing patterns in a HPV 16-containing keratinocyte cell line. *Virology* 1990;**178**:254–62.
- 51 **Rohlfis M**, Winkenbach S, Meyer S, et al. Viral transcription in human papillomavirus type-16. *Virology* 1991;**183**:331–42.
- 52 **Stöppler H**, Stöppler MC, Schlegel R. Transforming proteins of the papillomaviruses. *Intervirology* 1994;**37**:168–79.
- 53 **Sousa R**, Dostatni N, Yaniv M. Control of papillomavirus gene expression. *Biochem Biophys Acta* 1999;**1032**:19–37.
- 54 **Iglesias M**, Yen K, Gaiotti D, et al. Human papillomavirus type 16 E7 protein sensitizes cervical keratinocytes to apoptosis and release of interleukin-1 α . *Oncogene* 1999;**17**:1195–205.
- 55 **Sanchez-Perez AM**, Soriano S, Clarke AR, et al. Disruption of the human papillomavirus type 16 E2 gene protects cervical carcinoma cells from E2F-induced apoptosis. *J Gen Virol* 1997;**78**:3009–18.
- 56 **Merrick DT**, Blanton RA, Gown AM, et al. Altered expression of proliferation and differentiation markers in human papillomavirus 16 and 18 immortalized epithelial cells grown in organotypic cultures. *Am J Pathol* 1992;**140**:167–77.
- 57 **Cannizzaro LA**, Durst M, Mendez MJ, et al. Regional chromosome location of human papillomavirus integration site near fragile site, oncogenes, and cancer chromosome break points. *Cancer Genet Cytogenet* 1988;**33**:93–8.

- 58 **Butler D**, Collins C, Mabruk M, *et al*. Deletion of the FHIT gene in neoplastic and invasive cervical lesions is related to high-risk HPV infection but is independent of histopathological features. *J Pathol* 2000;**192**:502–10.
- 59 **Pei XF**. The human papillomavirus E6/E7 genes induce discordant changes in the expression of cell growth regulatory proteins. *Carcinogenesis* 1996;**17**:1395–401.
- 60 **Fuchs PG**, Pfister H. Transcription of papillomavirus genomes. *Intervirology* 1944;**37**:159–67.
- 61 **Hwang E-S**, Riese DJH, Settleman J, *et al*. Inhibition of cervical carcinoma cell line proliferation by the introduction of a bovine papillomavirus regulatory gene. *J Virol* 1993;**67**:3720–9.
- 62 **Dowhanick JJ**, McBride AA, Howley PM. Suppression of cellular proliferation by the papillomavirus E2 protein. *J Virol* 1995;**69**:7791–9.
- 63 **Bouvard V**, Storey A, Pim D, *et al*. Characterization of the human papillomavirus E2 protein: evidence of trans-activation and trans-repression in cervical keratinocytes. *EMBO J* 1994;**13**:5451–9.

ECHO

Molecular interactions hold the key to relieving bone loss



Please visit the Molecular Pathology website [www.molpath.com] for link to this full article.

Major crippling diseases worldwide may be amenable to treatment with inhibitors of a system that controls bone loss, according to a review of the molecular events in bone metabolism and arthritis.

The balance between bone loss by osteoclasts and bone formation by osteoblasts in normal bone metabolism is controlled by molecules in the TNF-TNFR superfamily.

RANKL (ligand to receptor activator of NFκB) is a membrane bound protein of osteoblasts and is produced also by activated T cells. Its receptor, RANK, is a transmembrane protein in osteoclasts and chondrocytes. OPG (osteoprotegerin) is a soluble competitive decoy receptor for RANKL binding. The degree of the RANKL-RANK interaction determines bone loss.

Importantly, this system operates in all animal models of arthritis so far studied, causing bone loss and eventual crippling, both of which OPG prevents. The hope is therefore that OPG can be used in various forms of arthritis in humans and in some immune disease—leukaemia, cancer metastasis, and autoimmune diseases.

Results so far are promising. OPG prevents bone destruction in cancer and metastatic associated bone pain, when bone destruction is associated with T cell activation. Further understanding of the pathogenic process and how T cell dependent RANKL is regulated may hold the possibility of cytokine inhibitors for clinical use.

Many conditions apart from arthritis and osteopenic disorders cause bone mineral density to fall. The burden of arthritis alone is enormous: one person in a hundred will have rheumatoid arthritis in Europe and North America and one in ten osteoarthritis.

▲ *Annals of the Rheumatic Diseases* 2002;**61**(Suppl II):ii32–ii39.



Squamous metaplasia induced by transfection of human papillomavirus DNA into cultured adenocarcinoma cells

T Kinjo, K Kamiyama, K Chinen, et al.

Mol Path 2003 56: 97-108

doi: 10.1136/mp.56.2.97

Updated information and services can be found at:

<http://mp.bmj.com/content/56/2/97.full.html>

These include:

References

This article cites 58 articles, 25 of which can be accessed free at:

<http://mp.bmj.com/content/56/2/97.full.html#ref-list-1>

Article cited in:

<http://mp.bmj.com/content/56/2/97.full.html#related-urls>

Email alerting service

Receive free email alerts when new articles cite this article. Sign up in the box at the top right corner of the online article.

Notes

To request permissions go to:

<http://group.bmj.com/group/rights-licensing/permissions>

To order reprints go to:

<http://journals.bmj.com/cgi/reprintform>

To subscribe to BMJ go to:

<http://group.bmj.com/subscribe/>